

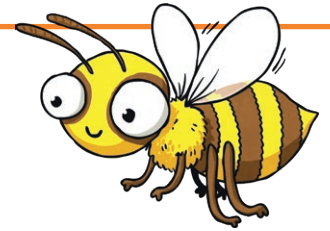
Spelling Bee's Adverb Sentences

Creating Adverbs Using the Suffix -ly (where the root word ends in 'le')

Adverbs can be made by adding -ly to the end of other words. However, when a word ends in 'le', you must change the 'le' to the -ly suffix.

For example:

idle = idly



Change each of these words to adverbs by following this rule:

gentle

simple

humble

noble

horrible

terrible

possible

incredible

comfortable

probable

Now write a sentence using each one of the adverbs you have created.

e.g. **idly**: The teenager idly stood by and let his mother clean up his mess.

1. _____
2. _____
3. _____
4. _____
5. _____
6. _____
7. _____
8. _____
9. _____
10. _____